

### ADDITIONAL SAFETY / MAINTENANCE INFORMATION

This manual contains the information required to ensure safe operation and correct maintenance of M+E Tiltbed trailers. The general trailer handbook supplied with the trailer contains information regarding the use of all trailers, and should be read in conjunction with this publication.

Before using the trailer read these instructions carefully to ensure familiarity with the Tiltbed controls and operating limitations.



**Whilst every care is taken to ensure that the information in this safety/maintenance booklet is correct, no liability can be accepted for any loss, damage or injury caused by errors in, or omissions from, the information given.**

## Introduction

**The Tiltbed trailer consists of the following:**

**'A' Sub Frame.**

**Trailer Body.**

**Hydraulic System.**

**The 'A' Sub Frame:** Constructed of structural welded steel, with cast towing Coupling and Jockey Wheel.

**The Trailer Body:** Constructed of structural welded steel with multiple load lashing points, the floor comprises of an 18mm phenol high density plywood base flanked by steel decks. The trailer is equipped with a full road legal lighting & braking system. A Spare Wheel is fitted under the floor.

The body is available with a heavy-duty Chequer plate headboard, & removable sides, with provision for skid storage on both sides.

**The Tiltbed Hydraulic System:** The hydraulic ram's lower pivot point is housed in a 'bolt on' sub-frame constructed of structural welded steel mounted within the trailer base. The ram is connected to the combined Hydraulic Pump and oil reservoir by a hydraulic hose. The Pump sits on the 'A' Sub Frame.

**The Towing Vehicle:** All references to the Towing Vehicle\* are deemed to mean a vehicle which the vehicle manufacturer states is suitable for towing a trailer of this plated gross mass. For specific details contact the towing vehicle manufacturer or dealer.

## **Safety Advice**

The area beneath a raised Tiltbed must be kept clear of personnel at all times unless the Tiltbed body is completely **un-laden** & correctly supported using the integral prop supplied.

Operate the Tiltbed only on level surfaces. Do not stand or allow other people to stand at the back or front of the trailer during tilting.

Although the trailer can be safely tilted when free standing with the trailer handbrake on, on flat level firm concrete surfaces with our standard jockey wheel down, it is **strongly recommended** that the trailer remains coupled for road legal towing (Jockey wheel clear of the ground) to a suitable towing vehicle\* during all tilting operations

Do not operate the Tiltbed when parked on loose or uneven surfaces.

Ensure the towing vehicle handbrake is fully applied before tilting or loading the trailer.

Evenly distribute load on the Tiltbed trailer. Compact heavy items should be positioned centrally about the centre of the front and rear wheels, whilst achieving the correct positive nose weight (see plate on Coupling)

### **Never exceed the permitted load.**

Check for overhead obstructions, especially Power Cables prior to raising the Tiltbed.

Always ensure that the intended unloading area is clear before commencing the tilt.

Always tow the trailer with the Tiltbed body in the fully lowered position with the A Frame Securing Clamps applied.

The oil in the hydraulic system may constitute a fire hazard if the oil comes in contacts with a hot surface, such as a vehicle exhaust.

**A Frame Clamp Secured**



**A Frame Clamp Loose**



## Tilting the Trailer Body

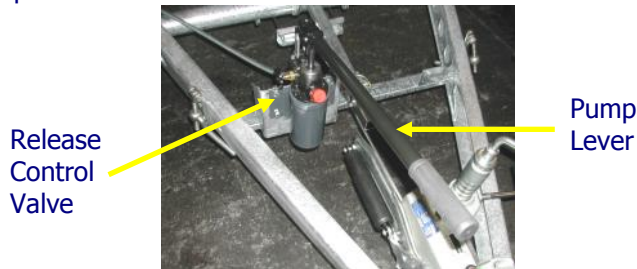
See safety information.

Ensure that the trailer is coupled to a suitable towing vehicle\* with the vehicle's handbrake fully on. If not connected to a towing vehicle, apply the trailer handbrake firmly.

Release the A Frame Securing Clamps.

Close the Release Control Valve on the Hydraulic Pump.

Operate the Pump Lever to tilt the trailer platform until the rear of the trailer touches the ground. Do not force the hydraulics beyond this point.



Lower the loading ramp or position the loading skids (dependant on option)

The trailer can now be loaded by driving (or winching) the vehicle or machinery up and onto the bed.

Check that there are no obstructions and lower the trailer body by gradually releasing control valve until the platform is fully lowered. Close the valve after use.

Reapply the A Frame Securing Clamps.

Stow and secure the ramp or skids as appropriate.

Ensure the load is evenly distributed and secured for transport.

Before tilting the loaded platform, ensure the load is safe and secure. Be aware of the potential slip hazard when walking on the raised body of the trailer, ramp and/or skids.

## Maintenance and Servicing

If the Tiltbed body needs to be raised for carrying out maintenance activities it must be correctly supported using the integral Tiltbed Safety prop provided only when **fully un-laden**. See safety information.

Raise the Tiltbed fully.

Unclip the prop, swing it up and offer it up to the prop bearer on the underside of the Tiltbed body,

Lower the Tiltbed body until the prop is fully seated in the bearer - see pictures below. Keep hands clear of the lowering body

It is now safe for a competent person to carry out maintenance activities beneath the Tiltbed body. On completion of the maintenance activity:

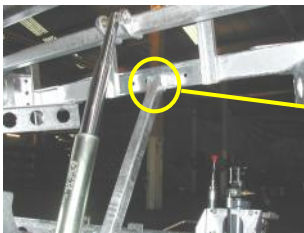
Raise the Tiltbed body fully.

Stow the Tiltbed Safety prop.

Lower the Tiltbed body.

When the Tiltbed body is fully lowered re-apply the A Frame Securing Clamps.

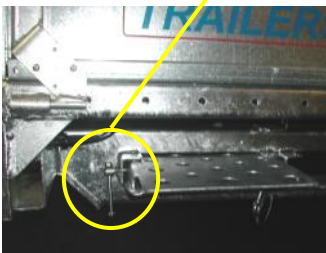
### **Safety Prop in Maintenance Position**



### **Safety Prop Stowed**

### **Skids Option—Storage and Retention**

**Release Screw Clamp to the rear side, Carabiner to the front side,**



## Cleaning

Regular washing will help to prolong the original finish of the trailer

Do not clean with solvents. Only water & car body soaps / shampoos.

Do not spray a power washer jet or hose pipe directly onto electrical components or decals.

## Recommended Weekly Maintenance

**Hydraulic oil:** - If the level is low top up to the recommended level using Valvoline Ultramax HLP 32 or an equivalent mineral based hydraulic oil with a viscosity of SAE10-20w (ISO 32).

**Visual Inspection:** - Carry out a visual inspection of the hydraulic hose, hydraulic ram and pump for signs of leakage. Inspect all electrical cables and fittings and the Trailer structure for general damage.

If the Tiltbed trailer does not operate smoothly, or its performance appears reduced or you have any concerns at all take it to a Tiltbed trailer specialist for further investigation.

## Recommended Bi-Monthly Maintenance

(To be carried out in addition to weekly maintenance)

**Visual Inspection:** - Visually inspect the hydraulic ram pivots and body pivots ensuring they are free from foreign objects and that they are not damaged.

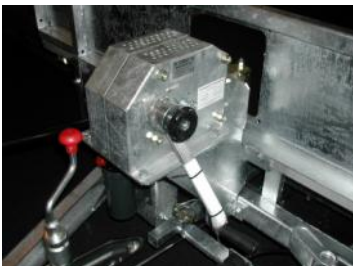
## Recommended 12 Monthly Maintenance

(To be carried out in addition to the bi-monthly maintenance)

**Visual Inspection:** - Carry out a visual inspection of the entire trailer and check the correct functioning of all moving parts.

## **Optional Speed Winch with Roller Box**

**– see separate instructions supplied when this option is specified.**





**ME** **MEREDITH  
AND EYRE**  
TRAILERS · AXLES · COUPLINGS · CHASSIS

Broadway Industrial Estate, Hyde, SK14 4QF Tel: 0161 368 6414 Fax: 0161 367 8702  
Email: [enquiries@meredithandeyre.co.uk](mailto:enquiries@meredithandeyre.co.uk) Web: [www.meredithandeyre.co.uk](http://www.meredithandeyre.co.uk)

TB2 –November 2010