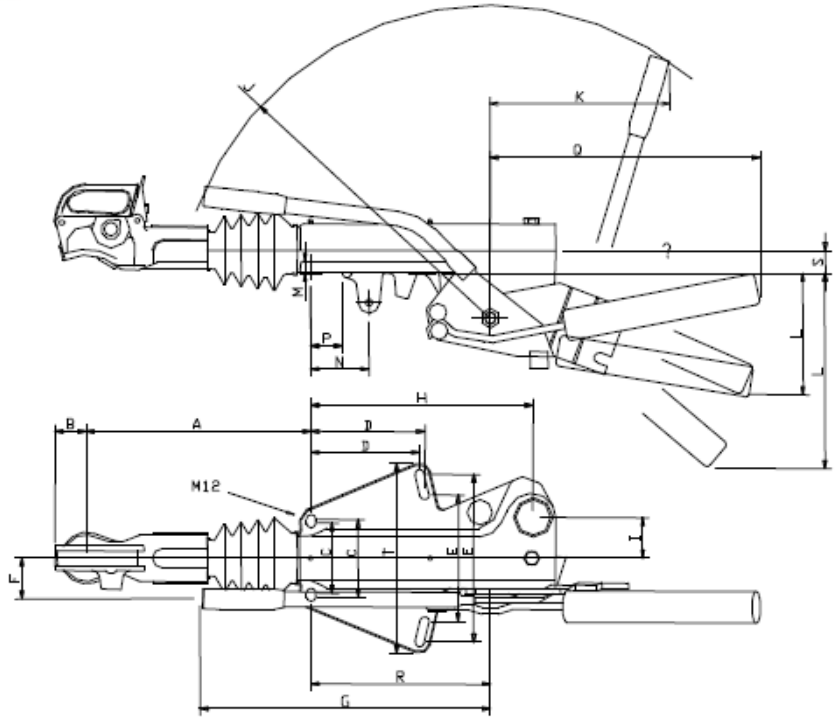


Bradley Cast A Frame EH Range



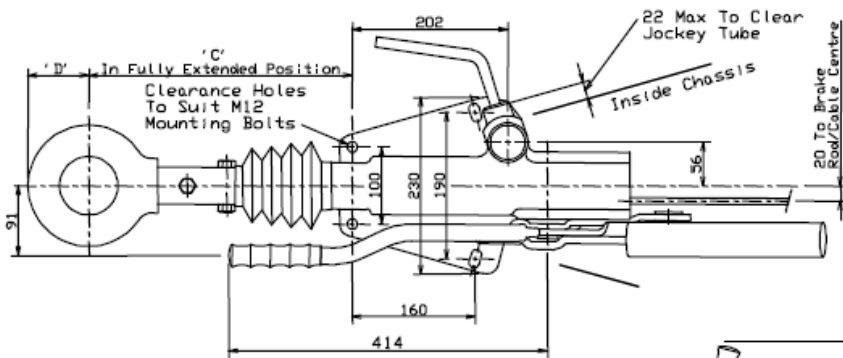
Head/Eye Type	EH09-EH27		EH35	
	'A'	'B'	'A'	'B'
50mm Head	323	50	292	50
30mm Eye	319	43	302	43
40mm Eye	319	50	302	50
40mm DIN Eye	338	50	417	50
50mm Eye	319	55	302	55
76mm NATO Eye	342	79	290	79

RANGE	C	D	E	F	G	H	I	J	K	L	M	N	P	Q	R	S	T
EH09-EH27	100-110	155-161	180-238	65	405	316	58	445	265	180-280	17	83	45	390	255	32	270
EH35	120	156-164	179-239	75	405	356	65	445	265	180-280	24	83	45	390	293	42	273

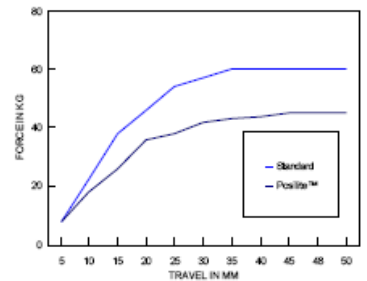
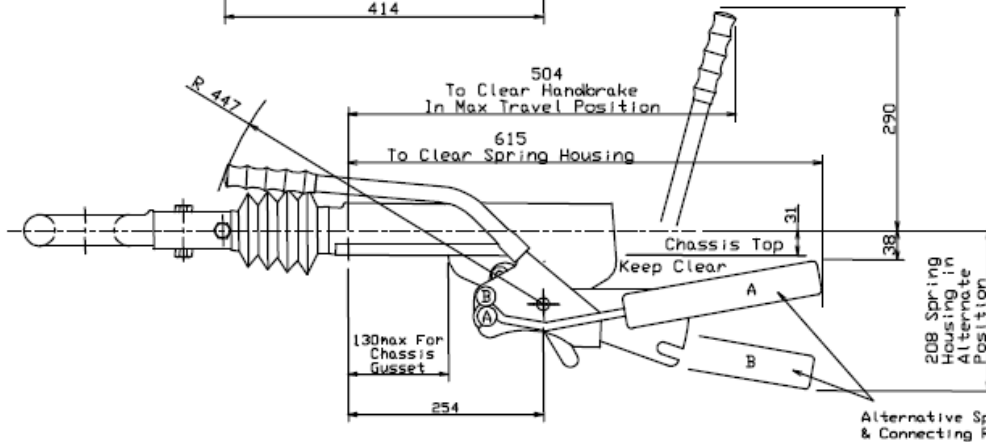
Coupling	Capacity Kg	Nose Load	Nett Weight Kg	71/320	94/20
EH09	450-900	100	21	CD97/001	e11*94/20*0368*00
EH14	700-1400	100	21	CD97/002	e11*94/20*0369*00
EH17	850-1700	100	21	CD97/003	e11*94/20*0370*00
EH20	1075-2000	100	21	CD97/004	e11*94/20*0371*00
EH27	1650-2750	100	21	CD97/005	e11*94/20*0372*00
EH35	2250-3500	120	28	CD97/006	e11*94/20*0373*00

Coupling	50mm Head	30mm Eye	40mm Eye	50mm Eye	76 NATO Eye	40mm DIN Eye
EH09	EH09MF	EH093F	EH094F	EH095F	EH09NF	EH09DF
EH14	EH14MF	EH143F	EH144F	EH145F	EH14NF	EH14DF
EH17	EH17MF	EH173F	EH174F	EH175F	EH17NF	EH17DF
EH20	EH20MF	EH203F	EH204F	EH205F	EH20NF	EH20DF
EH27	EH27MF	EH273F	EH274F	EH275F	EH27NF	EH27DF
EH35	EH35MF	EH353F	EH354F	EH355F	EH35NF	EH35DF

**Bradley Cast A Frame
HU Range**



Head/Eye Type	'C'	'D'
50mm Head	323	50
30mm Eye	319	43
40mm Eye	319	50
40mm DIN Eye	338	50
50mm Eye	319	55
76mm Eye	331	65
76mm NATO Eye	342	79



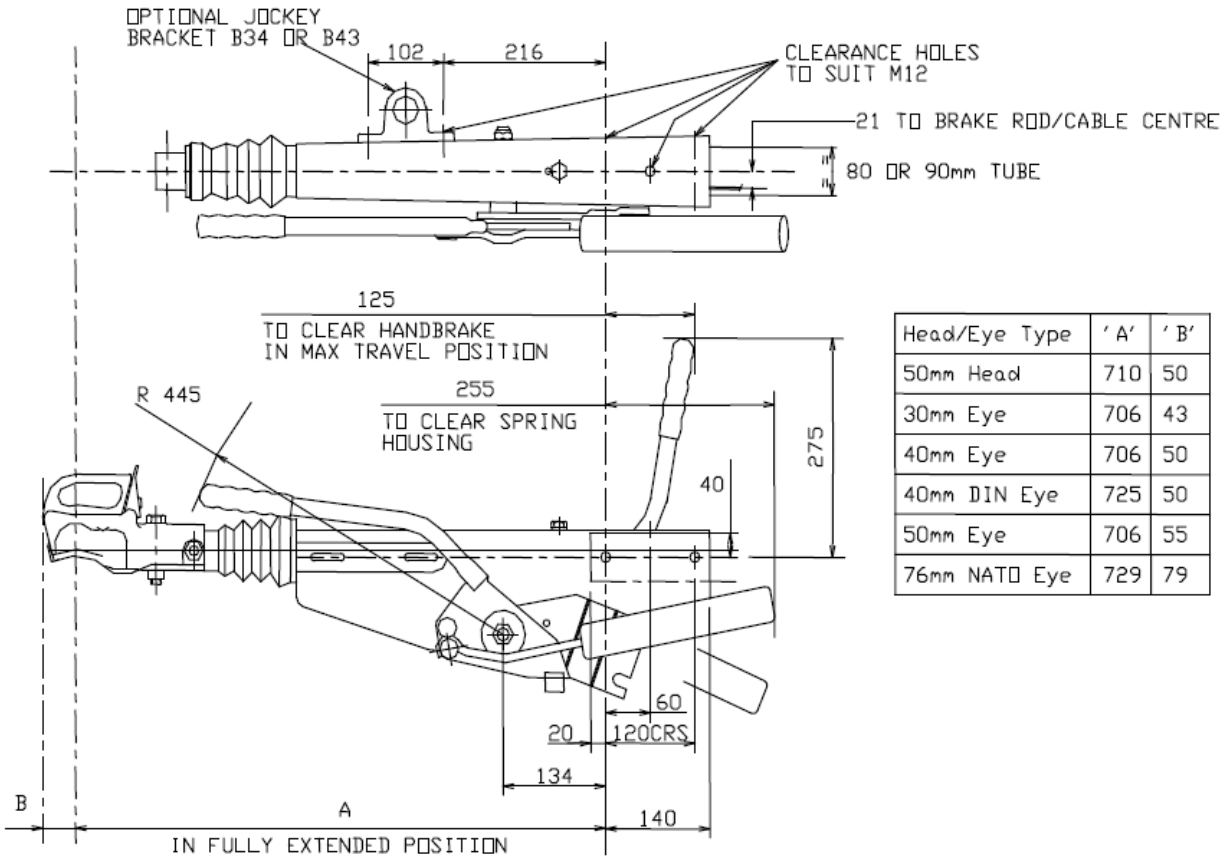
30% easier in its operation

Diagram appropriate for H09, H17, H26. Any requirement for H35 please contact sales

Coupling	Capacity Kg	Nose Load	Nett Weight Kg	71/320	94/20
HU3L	450 - 900	100	19.6	CD84/003 Ext 3	e11*94/20*0101*00
HU3H	850 - 1700	100	19.6	CD84/004 Ext 3	e11*94/20*0102*00
HU3HE	1650 - 2750	100	19.6	CD87/001 Ext 4	e11*94/20*0104*00
HU12	2250 - 3500	120	26.1	CD87/002	e11*94/20*0106*00

Coupling	50mm Head	30mm Eye	40mm Eye	50mm Eye	76 NATO Eye	40mm DIN Eye
HU3L	H09MB	H093B	H094B	H095B	H09NB	H09DB
HU3H	H17MB	H173B	H174B	H175B	H17NB	H17DB
HU3HE	H26MB	H263B	H264B	H265B	H26NB	H26DB
HU12	H35MB	H353B	H354B	H355B	H35NB	H35DB

Bradley Square Drawbar
Range—80 & 90mm
700kg to 2600kg

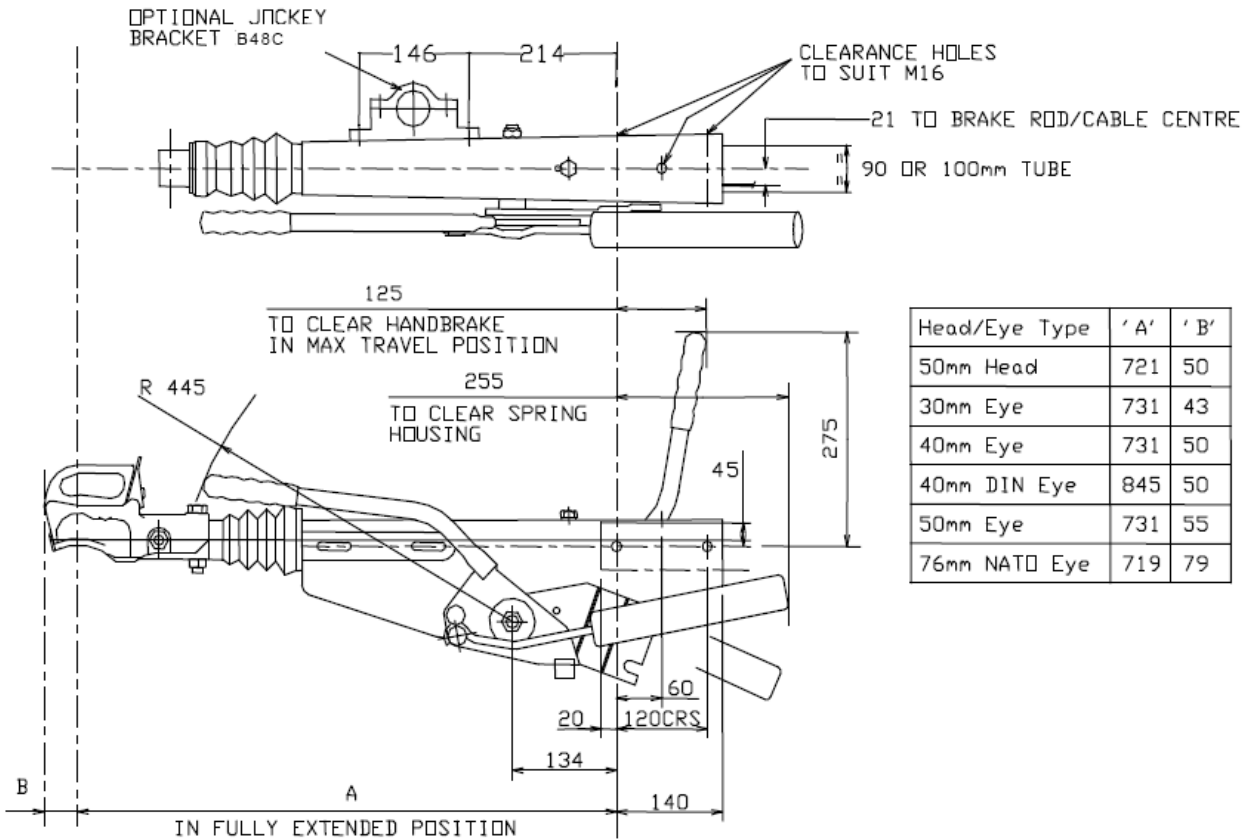


Head/Eye Type	'A'	'B'
50mm Head	710	50
30mm Eye	706	43
40mm Eye	706	50
40mm DIN Eye	725	50
50mm Eye	706	55
76mm NATO Eye	729	79

Coupling	50mm Head	30mm Eye	40mm Eye	50mm Eye	76 Nato Eye
S14/80	S14M8	S1438	S1448	S1458	S14N8
S14/90	S14M9	S1439	S1449	S1459	S14N9
S20/80	S20M8	S2038	S2048	S2058	S20N8
S20/90	S20M9	S2039	S2049	S2059	S20N9
S26/80	S26M8	S2638	S2648	S2658	S26N8
S26/90	S26M9	S2639	S2649	S2659	S26N9

Coupling	Capacity Kg	Nose Load	Nett Weight	EC94/20	71/320
S14/80	700 - 1400	100	18	00-0108	CD94/002 Ext 1
S14/90	700 - 1400	100	18	00-0108	CD94/002 Ext 1
S20/80	1130 - 2000	100	15	00-0108	CD93/001 Ext 1
S20/90	1130 - 2000	100	20	00-0108	CD93/001 Ext 1
S26/80	1650 - 2600	100	20	00-0108	CD90/006 Ext 1
S26/90	1650 - 2600	100	20	00-0108	CD90/006 Ext 1

Bradley Square Drawbar
Range—90 & 100mm
900kg to 3200kg



Head/Eye Type	'A'	'B'
50mm Head	721	50
30mm Eye	731	43
40mm Eye	731	50
40mm DIN Eye	845	50
50mm Eye	731	55
76mm NATO Eye	719	79

Coupling	50mm Head	30mm Eye	40mm Eye	50mm Eye
S18/90	S18M 9A	S1839	S1849	S1859
S18/100	S18M 10A	S18310	S18410	S18510
S32/90	S32M 9A	S3239	S3249	S3259
S32/100	S32M 10A	S32310	S32410	S32510

Coupling	Capacity Kg	Nose Load	Nett Weight	EC94/20	71/320
S18/90	900 - 1800	100	20	00-0107	CD90/013 Ext 1
S18/100	900 - 1800	100	20	00-0107	CD90/013 Ext 1
S32/90	1600 - 3200	120	10	00-0109	CD90/007 Ext 1
S32/100	1600 - 3200	120	21.5	00-0109	CD90/007 Ext 1